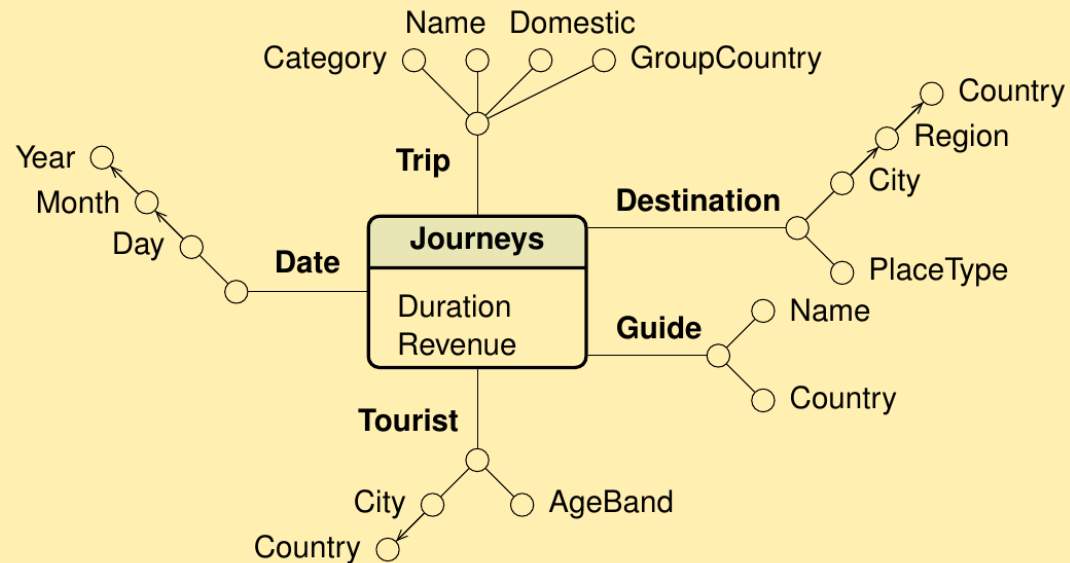
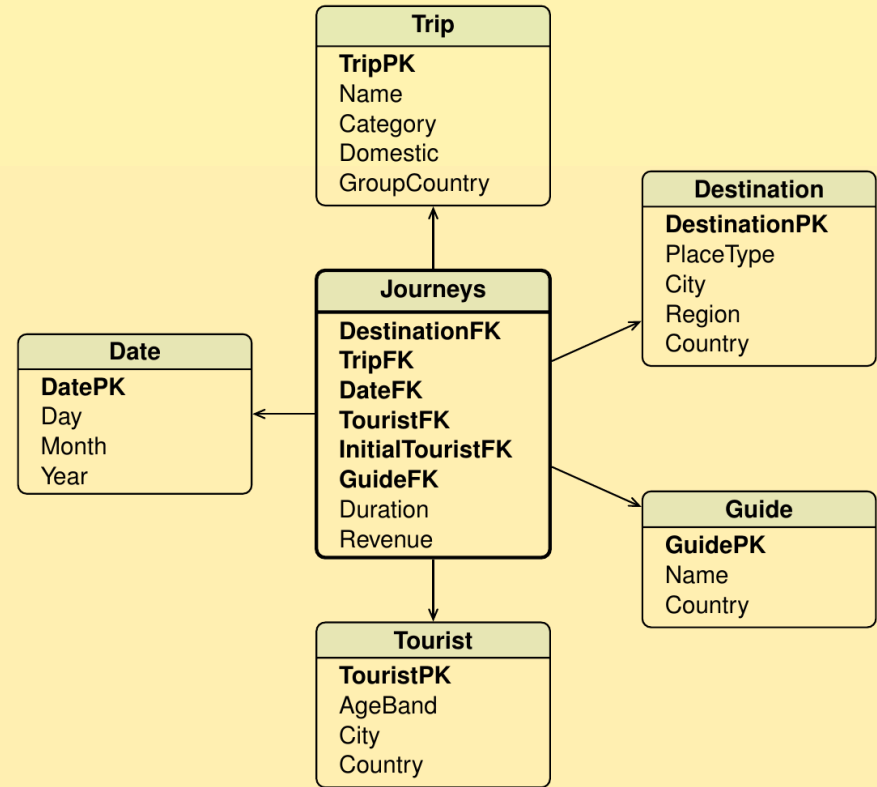


# TRAVEL AGENCY



**DFM SCHEMA**



**STAR SCHEMA**

# ADDITIONAL REQUIREMENTS

9. Revise design: a trip can stop at one or **more** destinations.
  1. Total number of tourists and average trip duration for **(i.e., including)** Florence, **by** age band
  4. Average trip revenue for tourists of a trip category level 1 in Tuscany, **by** type of destinations, and **by** year.

## SQL QUERIES ON (MODIFIED) STAR SCHEMA

# EXERCISE: REVISE CONCEPTUAL & LOGICAL SCHEMATA!

DFM SCHEMA

STAR SCHEMA