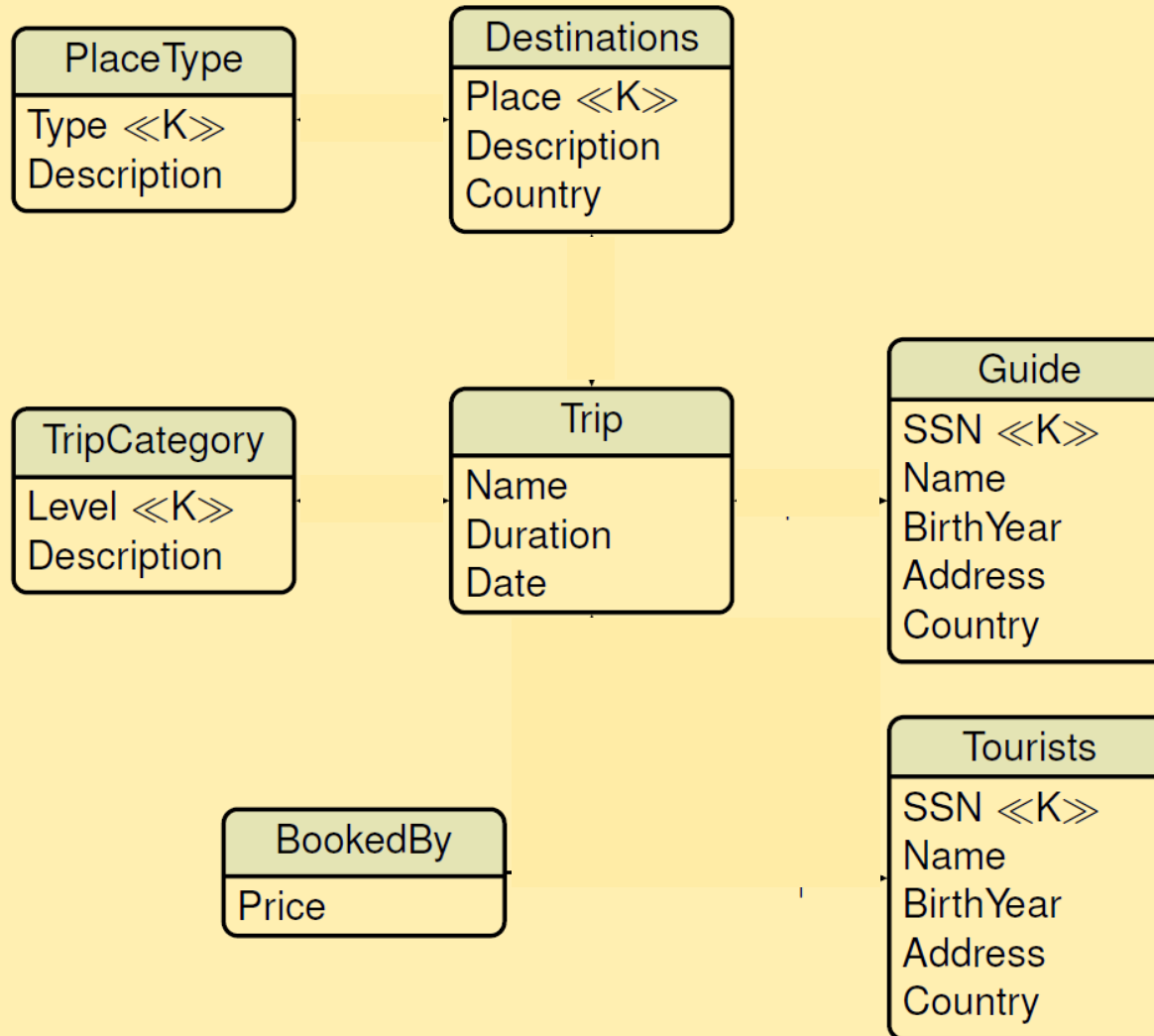


Assignment I

TRAVEL AGENCY Operational DB - Complete the schema!

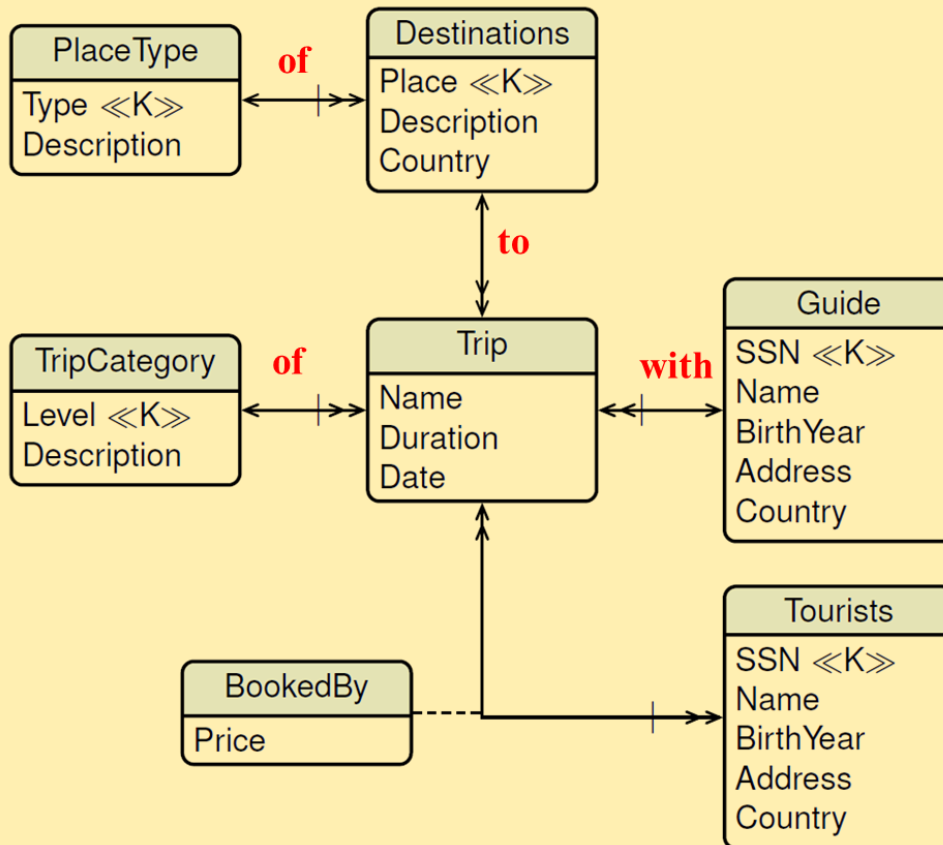


UNIVERSITÀ DI PISA



Assignment I - Solution

TRAVEL AGENCY Operational DB

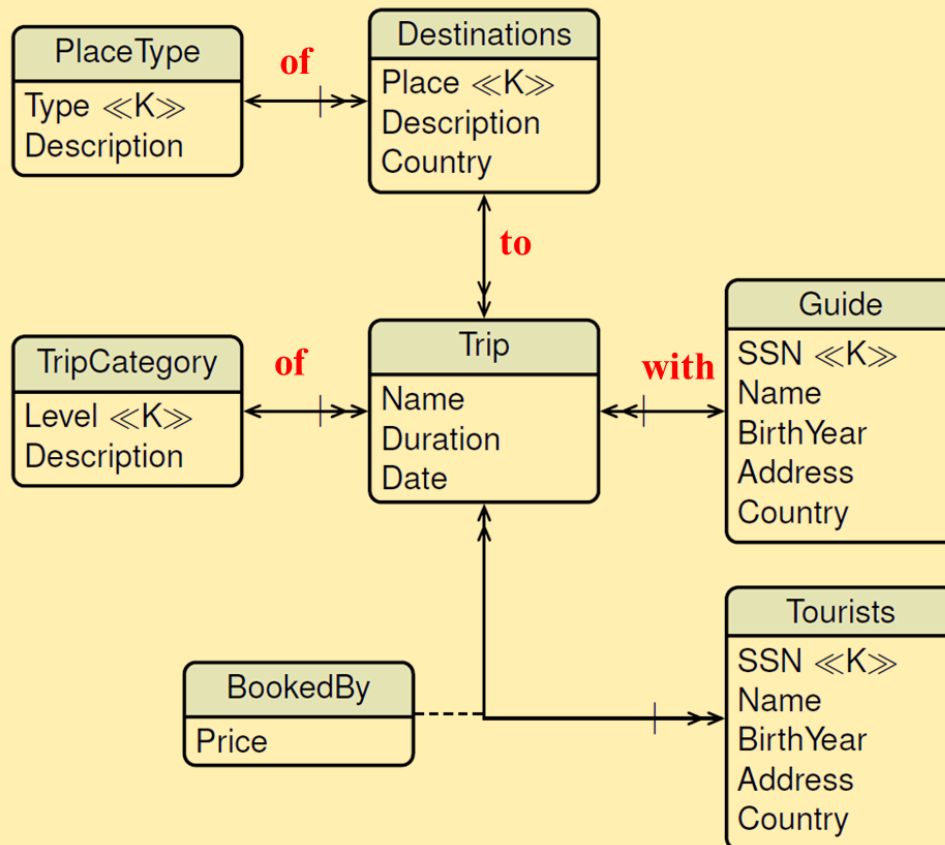


Assignment III

TRAVEL AGENCY Requirement Analysis



The travel agency is interested in a DM for analyzing the travel behavior of tourists.



1. Total number of tourists and average trip duration for Florence, **by** age band
2. Total number of tourists for domestic trips, **by** age band, **by** country.
3. Total number of tourists, **by** trip name and category, **by** group country (alternative: age band, guide, country).
4. Average trip revenue for trips of category level 1 in destination region Toscana, **by** type of destination, and **by** year.
5. Number of trips **by** place type, **by** month, and **by** guide country.



Requirement	Dimensions	Measures	Metrics
-------------	------------	----------	---------

1. Total number of tourists and average trip duration for Florence, **by** age band
2. Total number of tourists for domestic trips, **by** age band, **by** country.
3. Total number of tourists, **by** trip name and category, **by** group country (alternative: age band, guide, country).
4. Average trip revenue for tourists of a trip category level 1 in Toscana, **by** type of destination, and **by** year.
5. Number of trips **by** place type, **by** month, and **by** guide country.

Fact Granularity

Description

Preliminary dimensions