

# Methods for the specification and verification of business processes

MPB (6 cfu, 295AA)

Roberto Bruni

<http://www.di.unipi.it/~bruni>

18 - Workflow modules



# Object

We study Workflow modules to model interaction between workflows

# Problem

Not all tasks of a workflow net are automatic:  
they can be triggered manually or by a message

they can be used to trigger other tasks

How do we represent this?

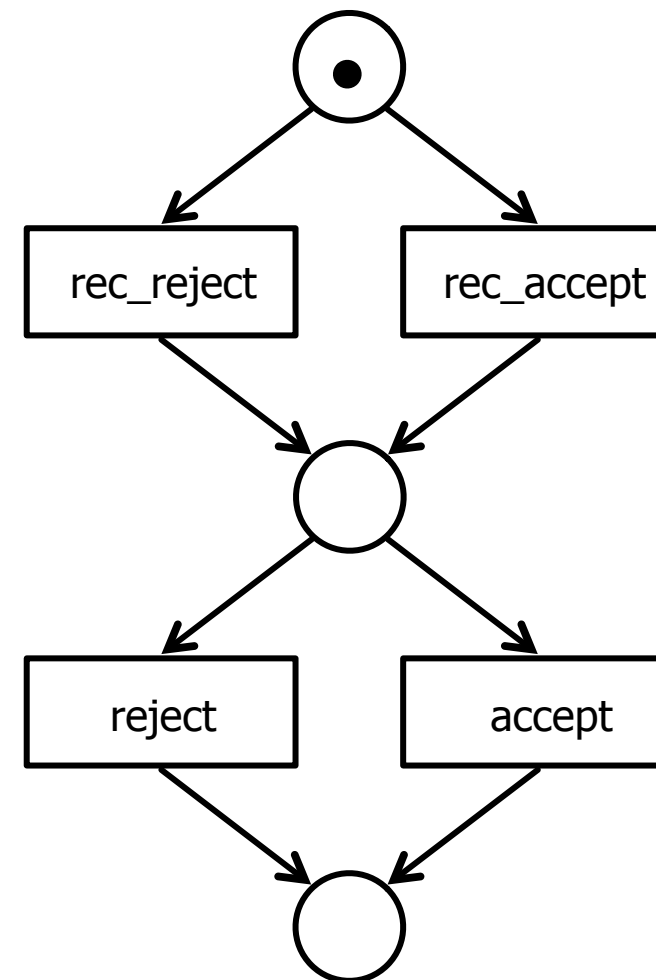
# Implicit interaction

Separately developed  
workflow

Seller

Some activities can  
input messages

Some activities can  
output messages

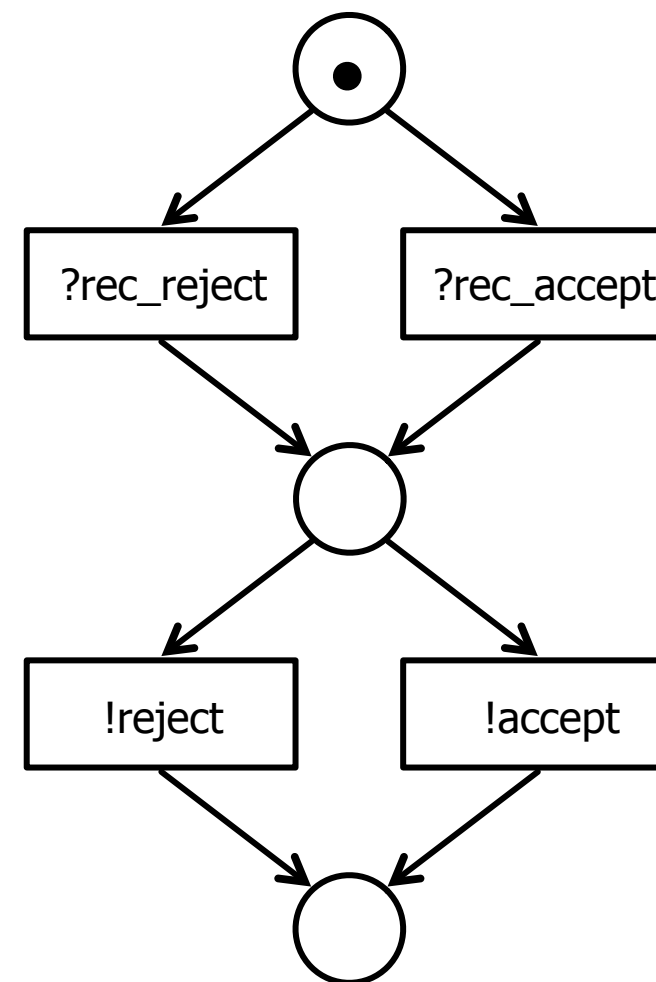


# Implicit interaction

Seller can receive  
(symbol ?)  
recommendations

Seller can send  
(symbol !)  
decisions

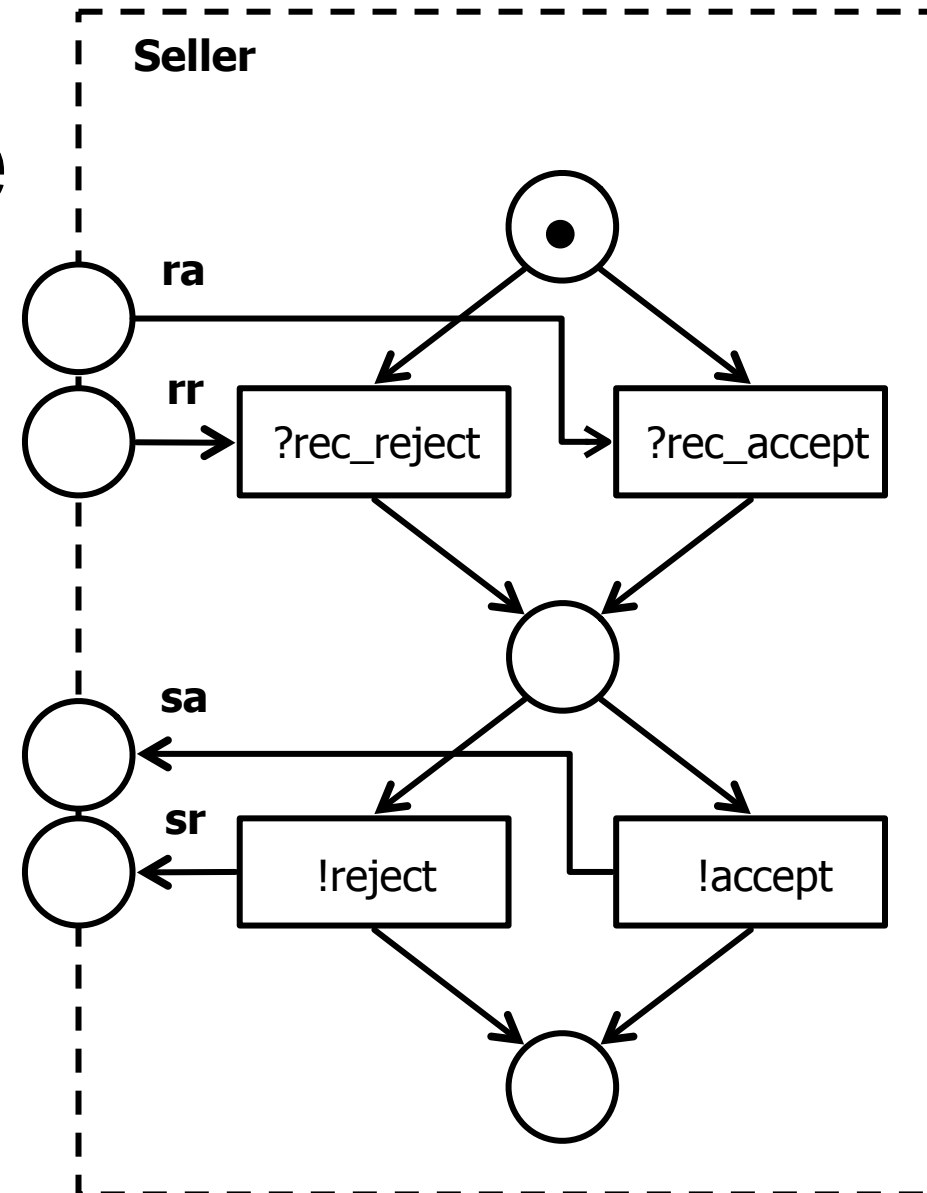
Seller



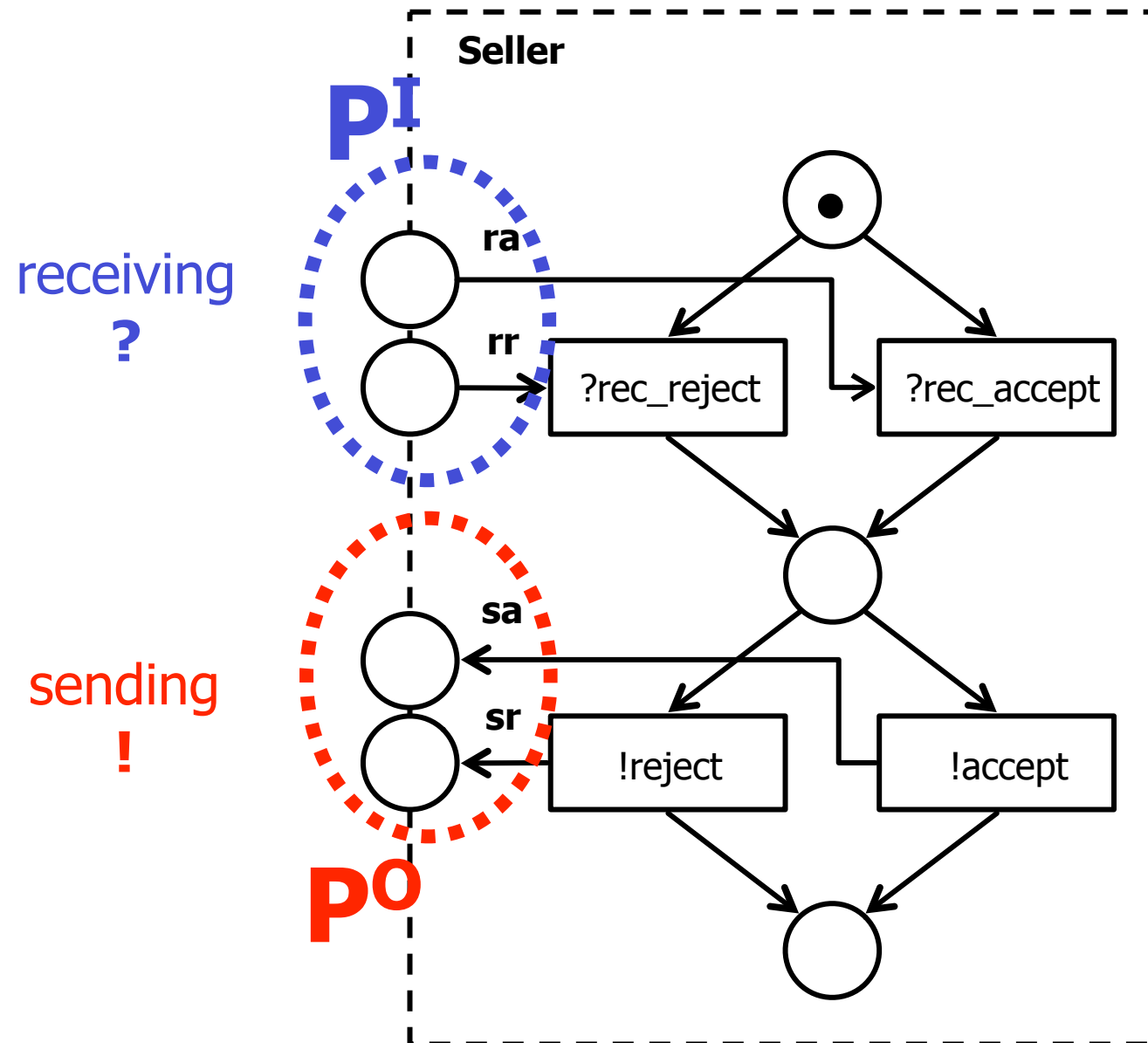
# Interface

Seller has an interface for interaction

It consists of some input places and some output places



# Interface



# Problem

Assume the original workflow net has been validated:

it is a sound (and maybe safe) workflow net

When we add the interface  
it is no longer a workflow net!



# Workflow Modules

**Definition:** A **workflow module** consists of

a workflow net  $(P, T, F)$

plus a set  $P^I$  of incoming places

plus a set of incoming arcs  $F^I \subseteq (P^I \times T)$

plus a set  $P^O$  of outgoing places

plus a set of outgoing arcs  $F^O \subseteq (T \times P^O)$

such that no transition is connected to both an incoming and an outgoing place

# Problem

Workflow modules must be capable to interact

How do we check that their interfaces match?

How do we combine them together?

# Strong structural compatibility

A set of workflow modules is called  
**strongly structural compatible**

if

for every message that can be sent there is a  
workflow who can receive it,

and

for every message that can be received there is a  
participant who can send it

(formats of message data are assumed to match)

# Weak structural compatibility

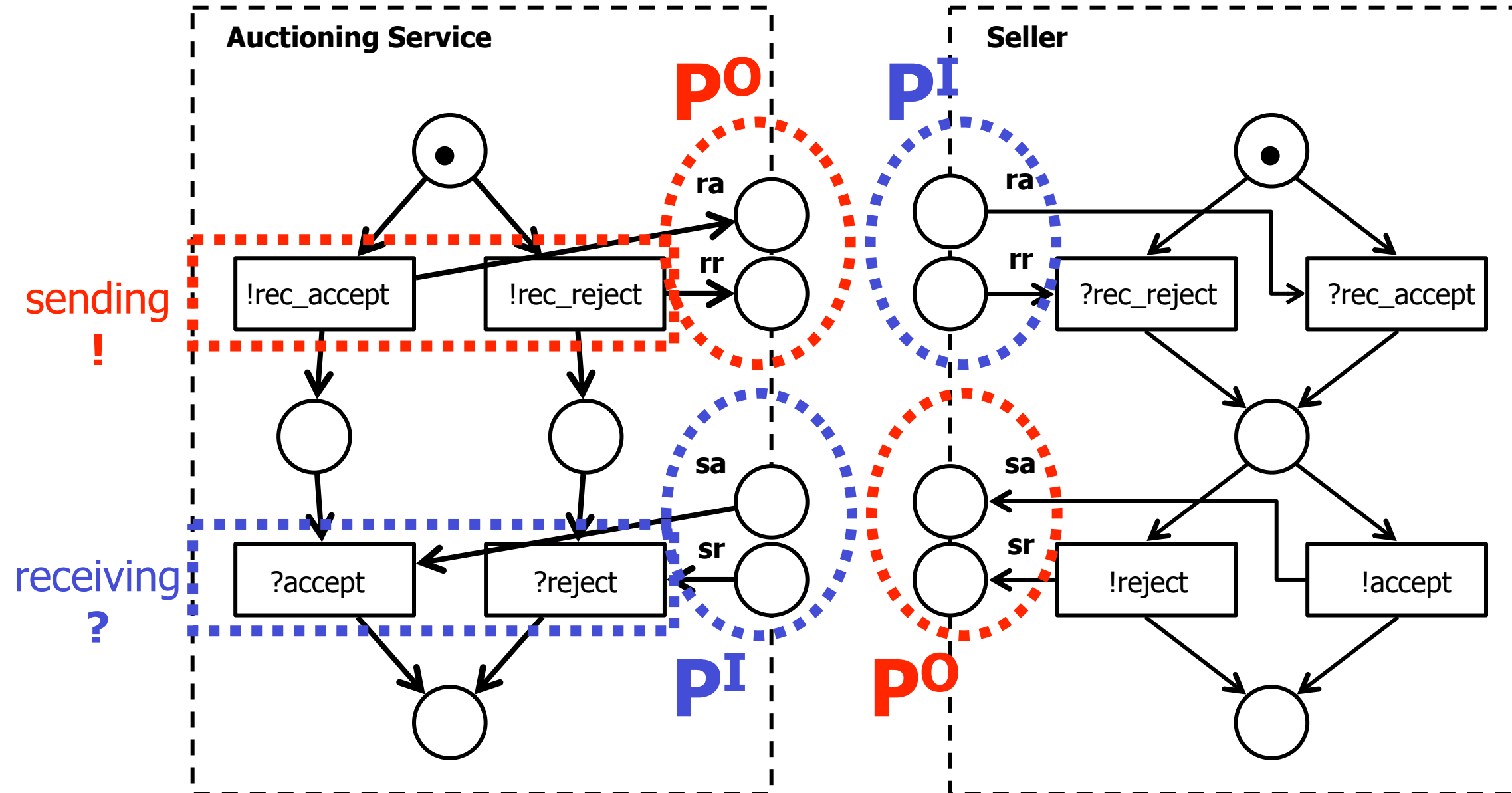
A set of workflow modules is called  
**weakly structural compatible**

if

all messages sent by participants  
can be received by other participants

more likely than a complete structural match  
(workflow modules are developed separately)

# Interaction



# Problem

We have added places and arcs to single nets

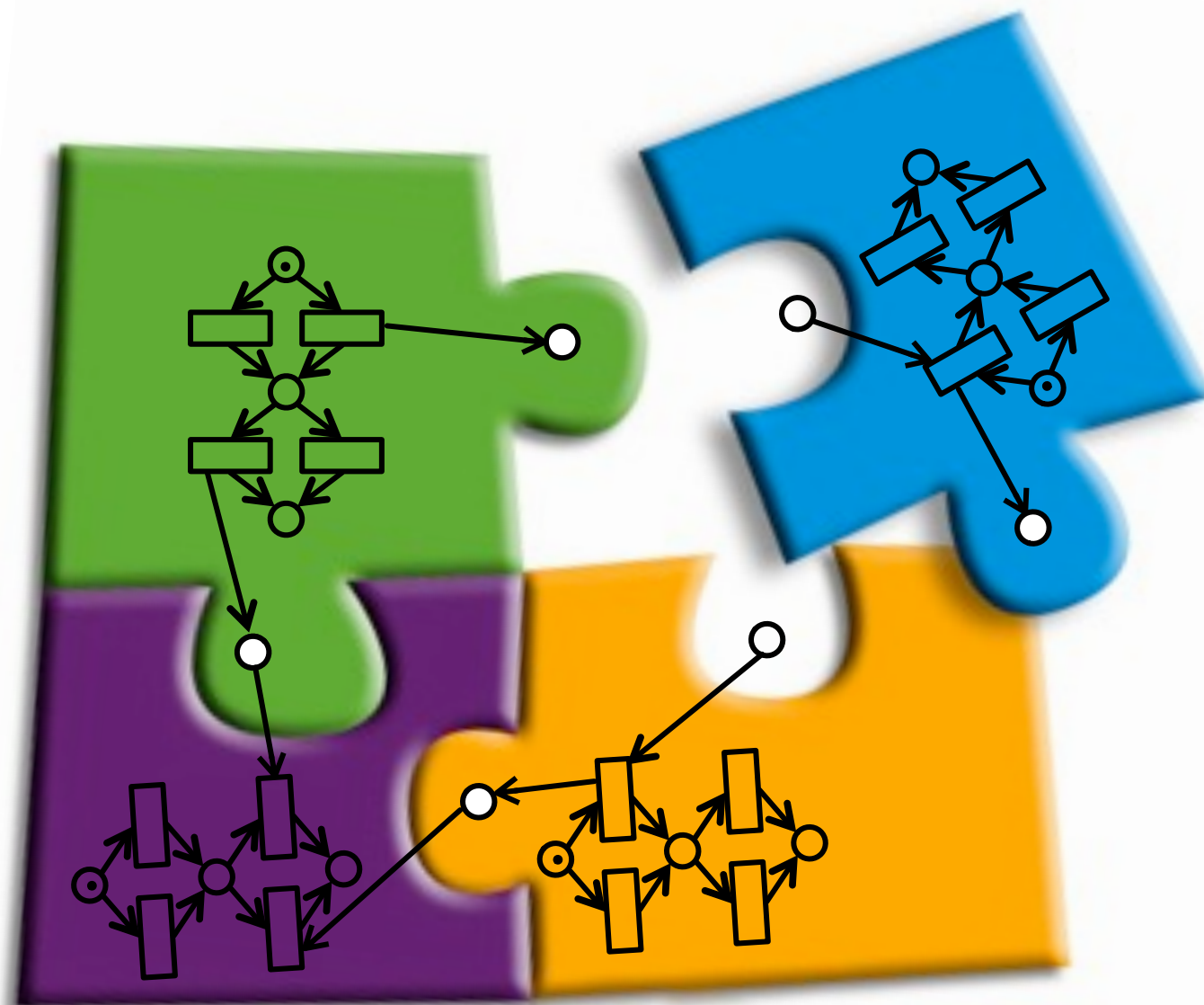
We have joined places of different nets

We have joined their initial markings

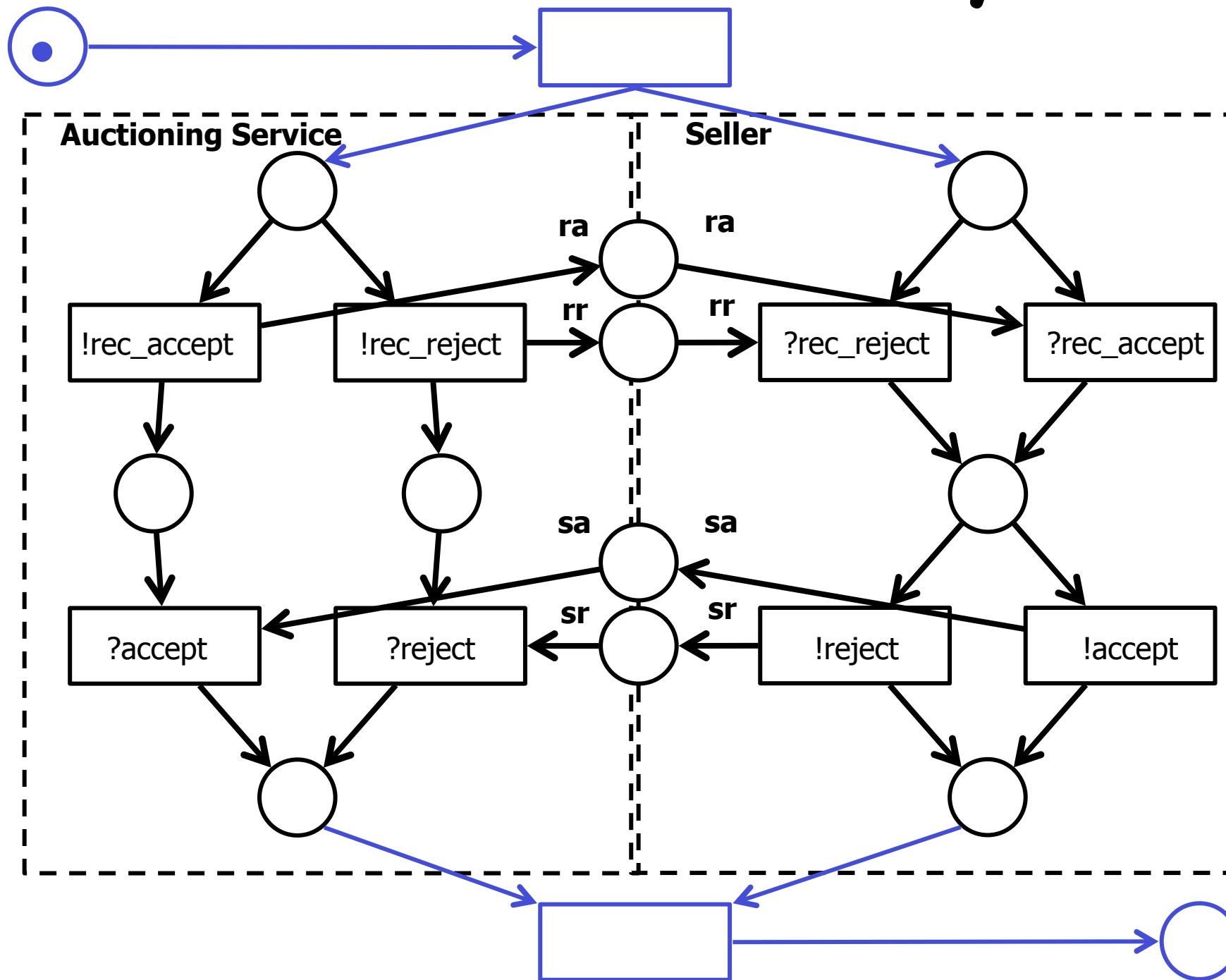
How do we check that the system behaves well?

What has this check to do with WF net soundness?

# Workflow systems



# Workflow system





# Workflow system

**Definition:** A **workflow system** consists of  
a set of  $n$  structurally compatible workflow modules  
(initial places  $i_1, \dots, i_n$ , final places  $o_1, \dots, o_n$ )

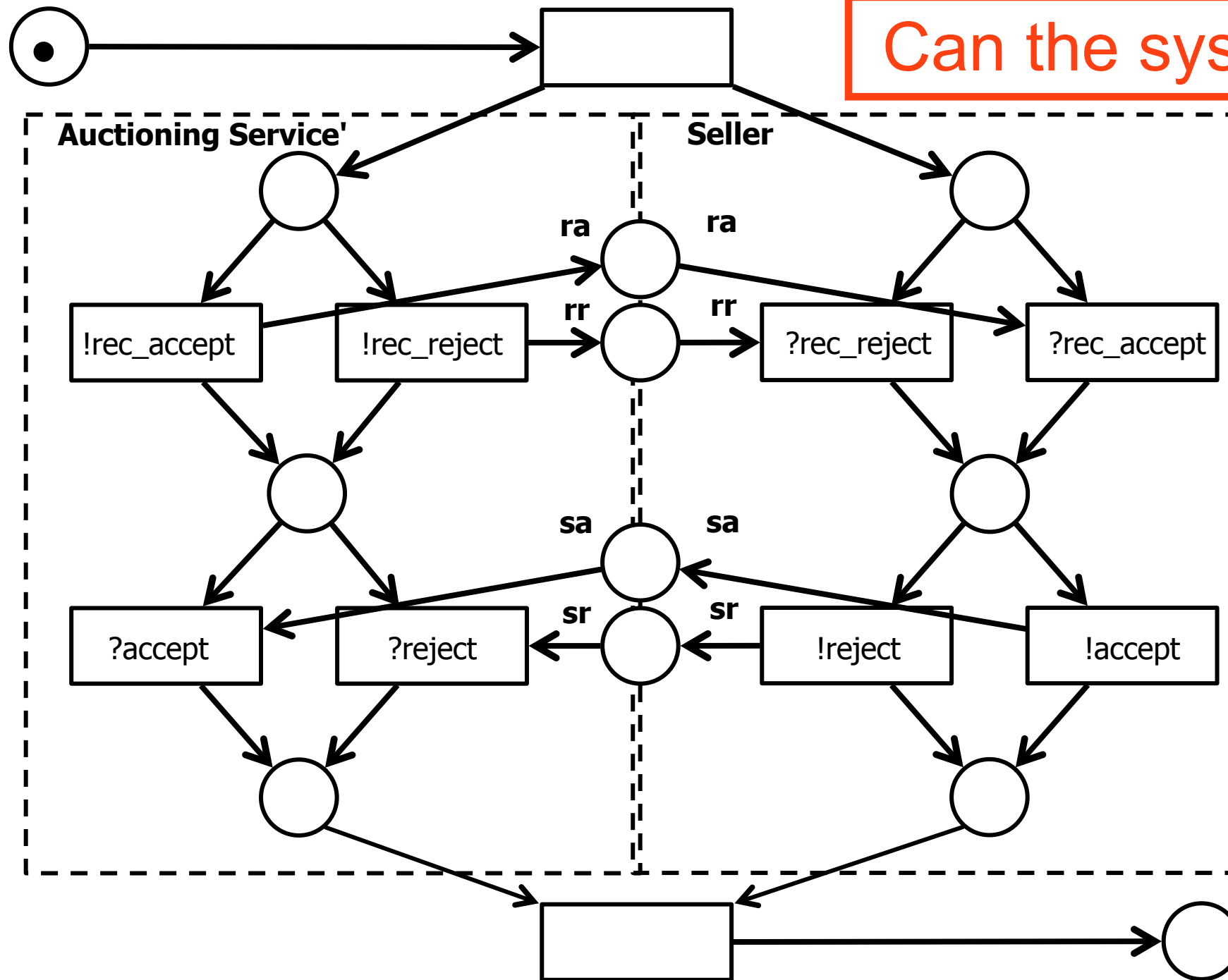
plus an initial place  $i$   
and a transition  $t_i$  from  $i$  to  $i_1, \dots, i_n$

plus a final place  $o$   
and a transition  $t_o$  from  $o_1, \dots, o_n$  to  $o$



# Exercise

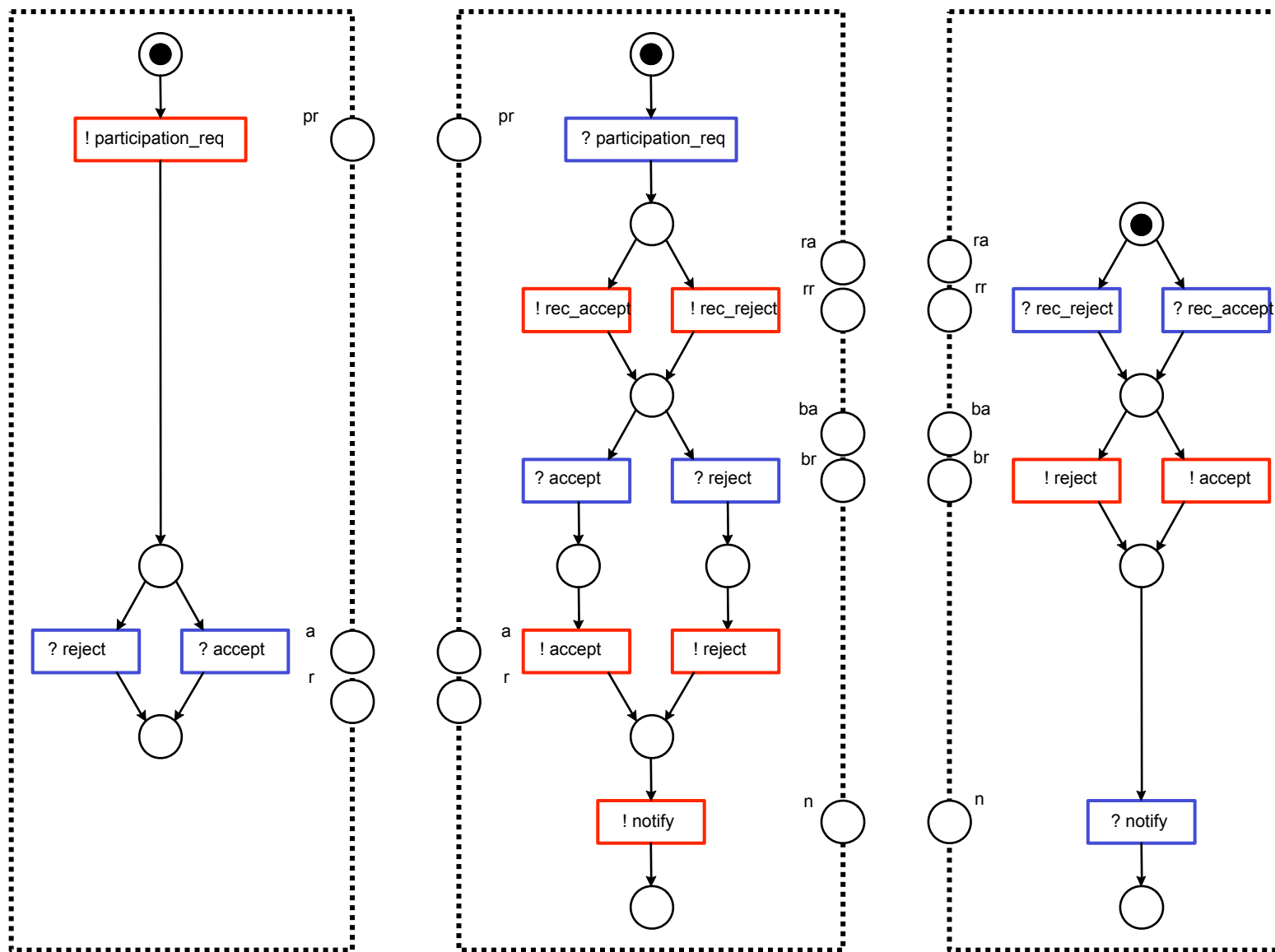
Can the system deadlock?



M. Weske: Business Process Management,  
© Springer-Verlag Berlin Heidelberg 2007

# Exercise

Complete with missing arcs the following behavioural interfaces and check their compatibility





# Weak soundness

# Problem

When checking behavioural compatibility  
the soundness of the overall net  
is a too restrictive requirement

Workflow modules are designed separately  
possibly reused in several systems  
it is unlikely that every functionality they offer is  
involved in each system

# Problem

**Definition:** A workflow net is **weak sound** if it satisfies “option to complete” and “proper completion”

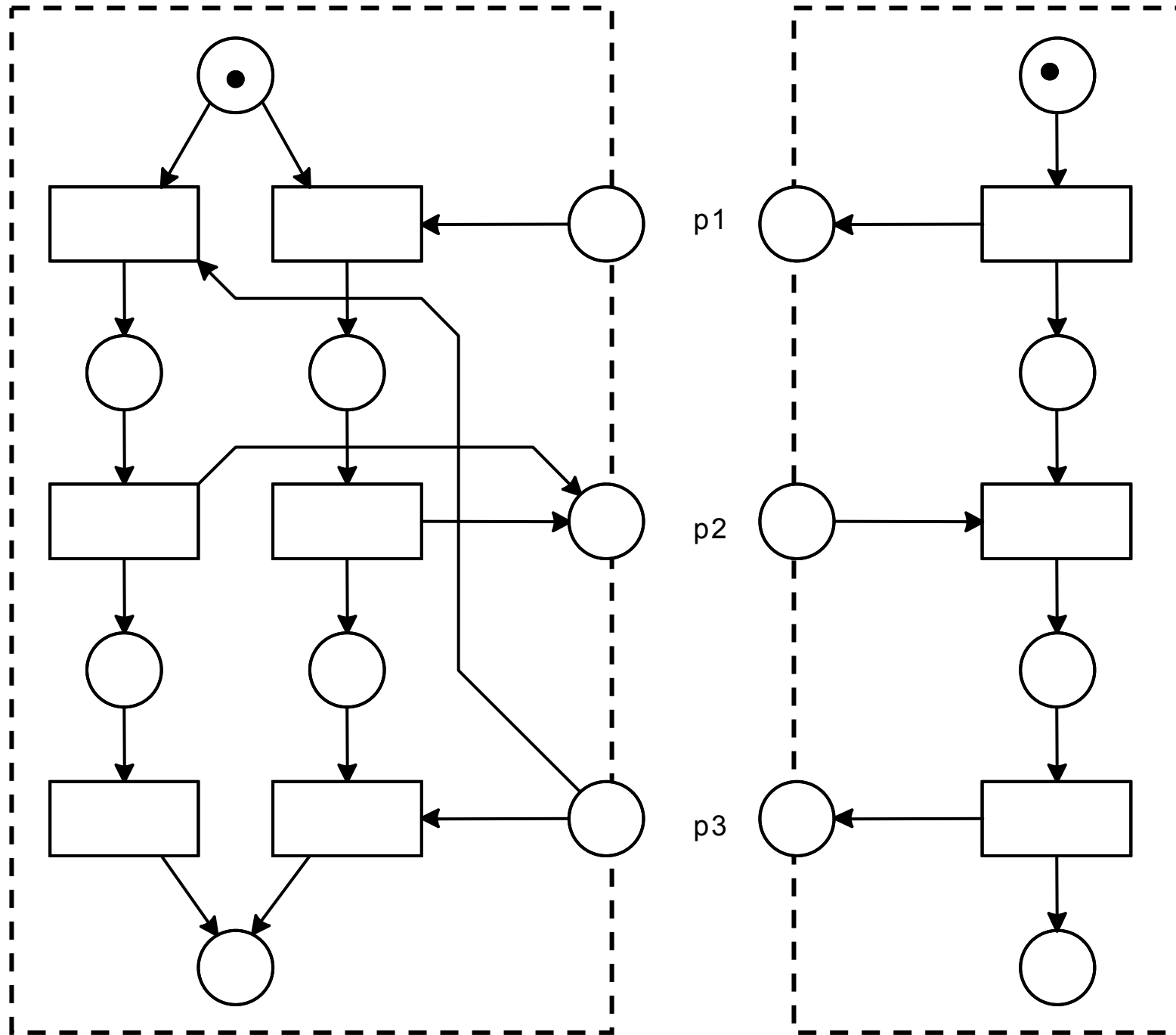
(dead tasks are allowed)

Weak soundness can be checked on the RG

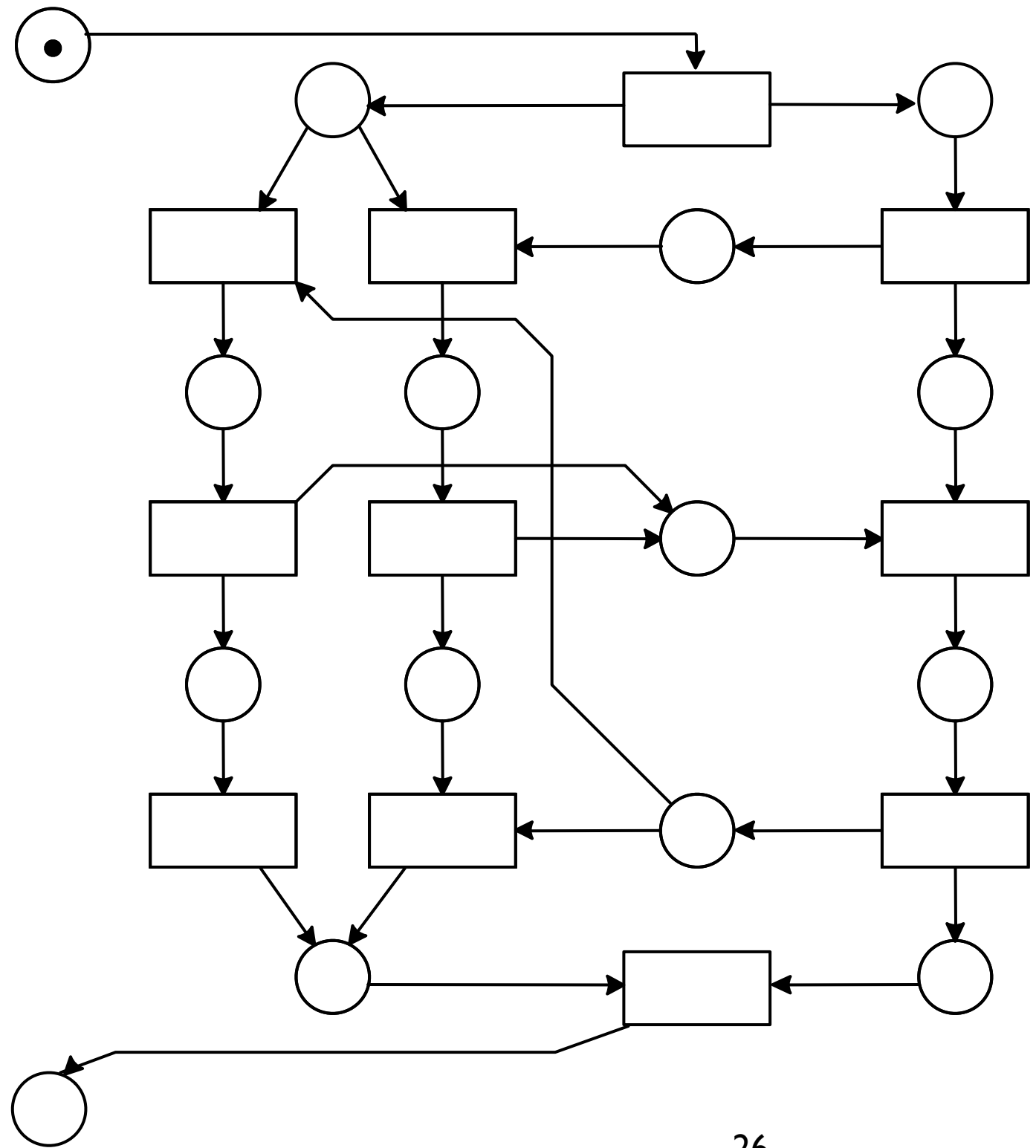
It guarantees deadlock freedom and proper termination of all modules



# Sound + Sound = ?

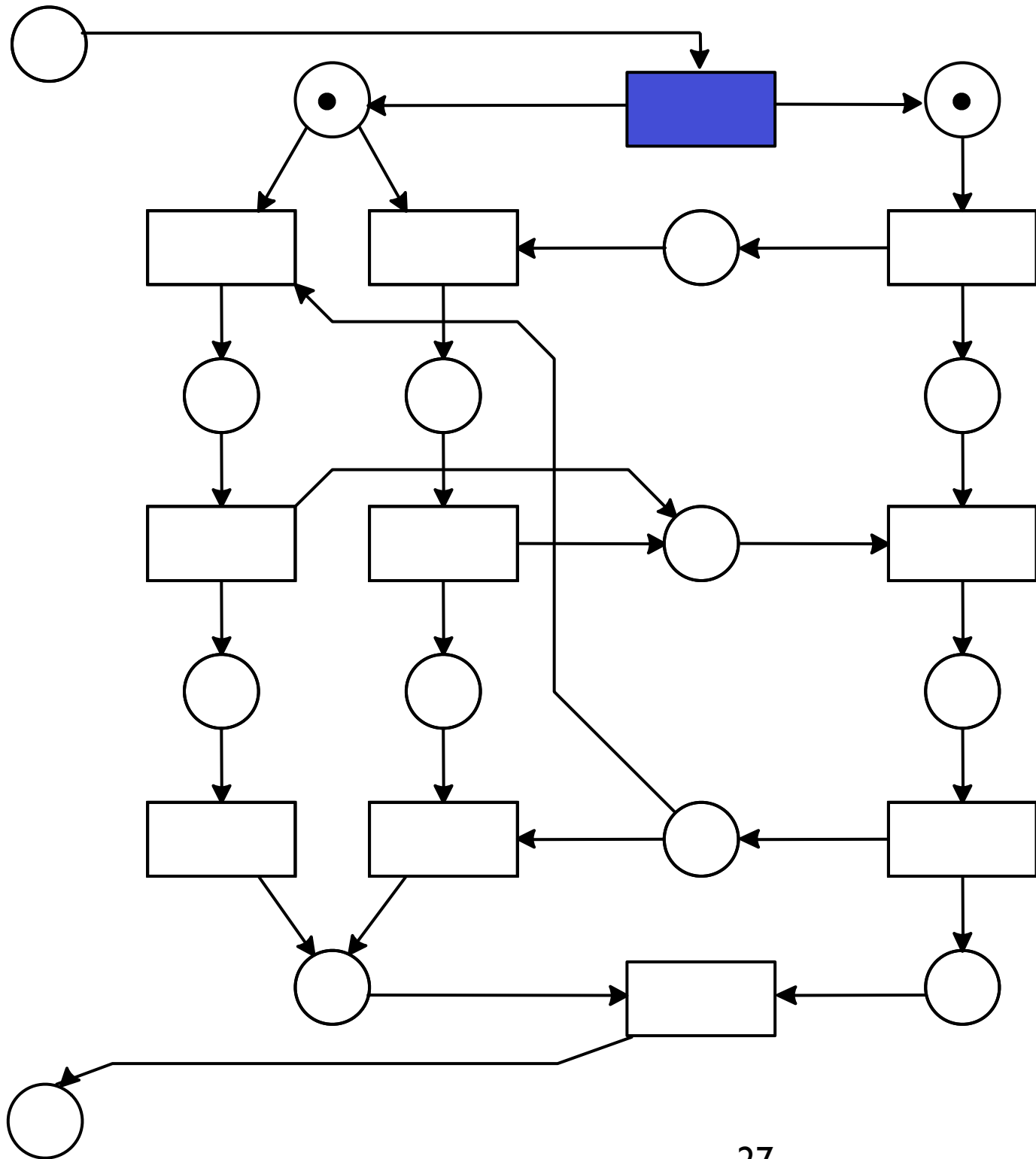


# Sound + Sound = not sound

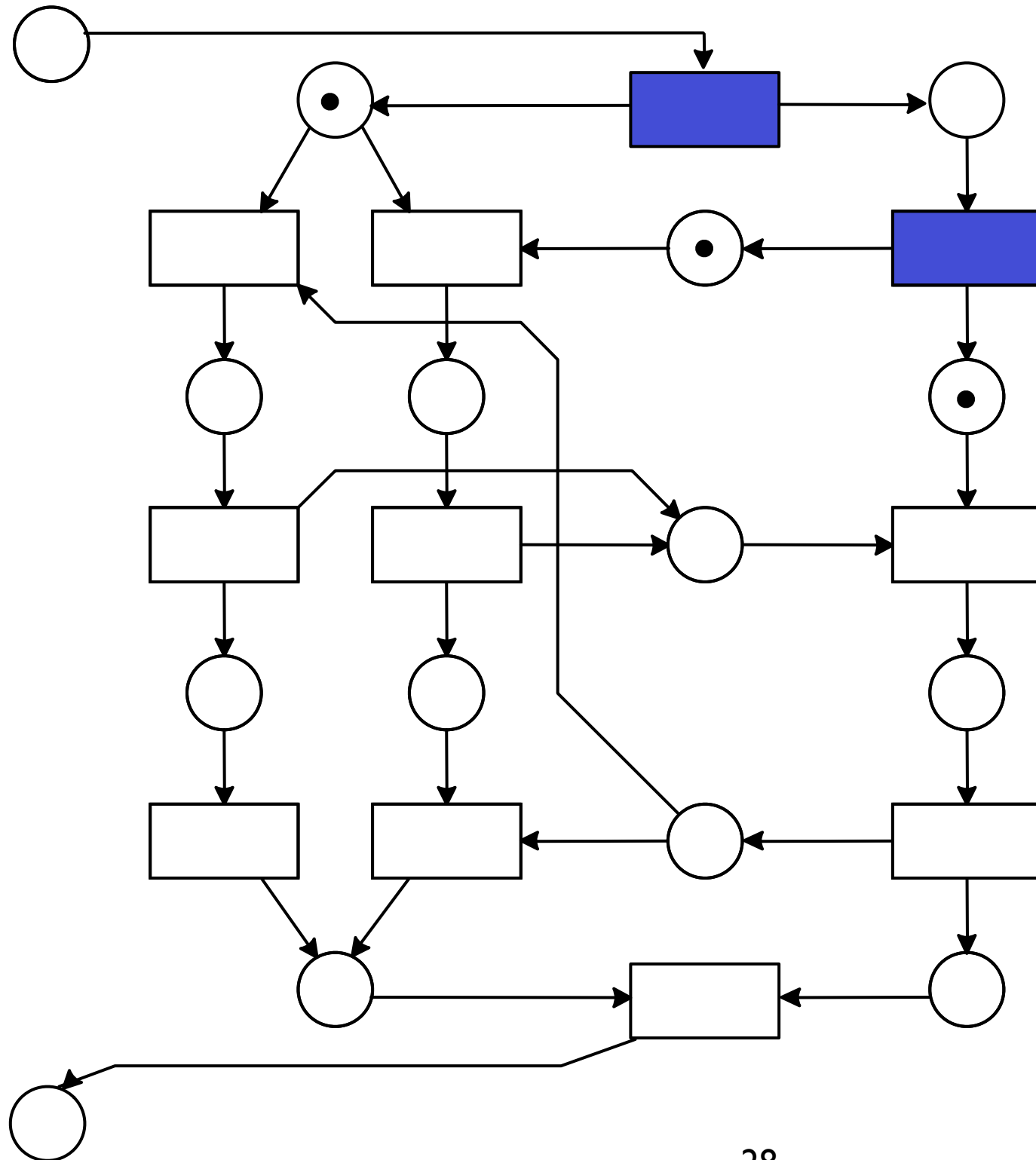


M. Weske : Business Process Management,  
© Springer-Verlag Berlin Heidelberg 2007

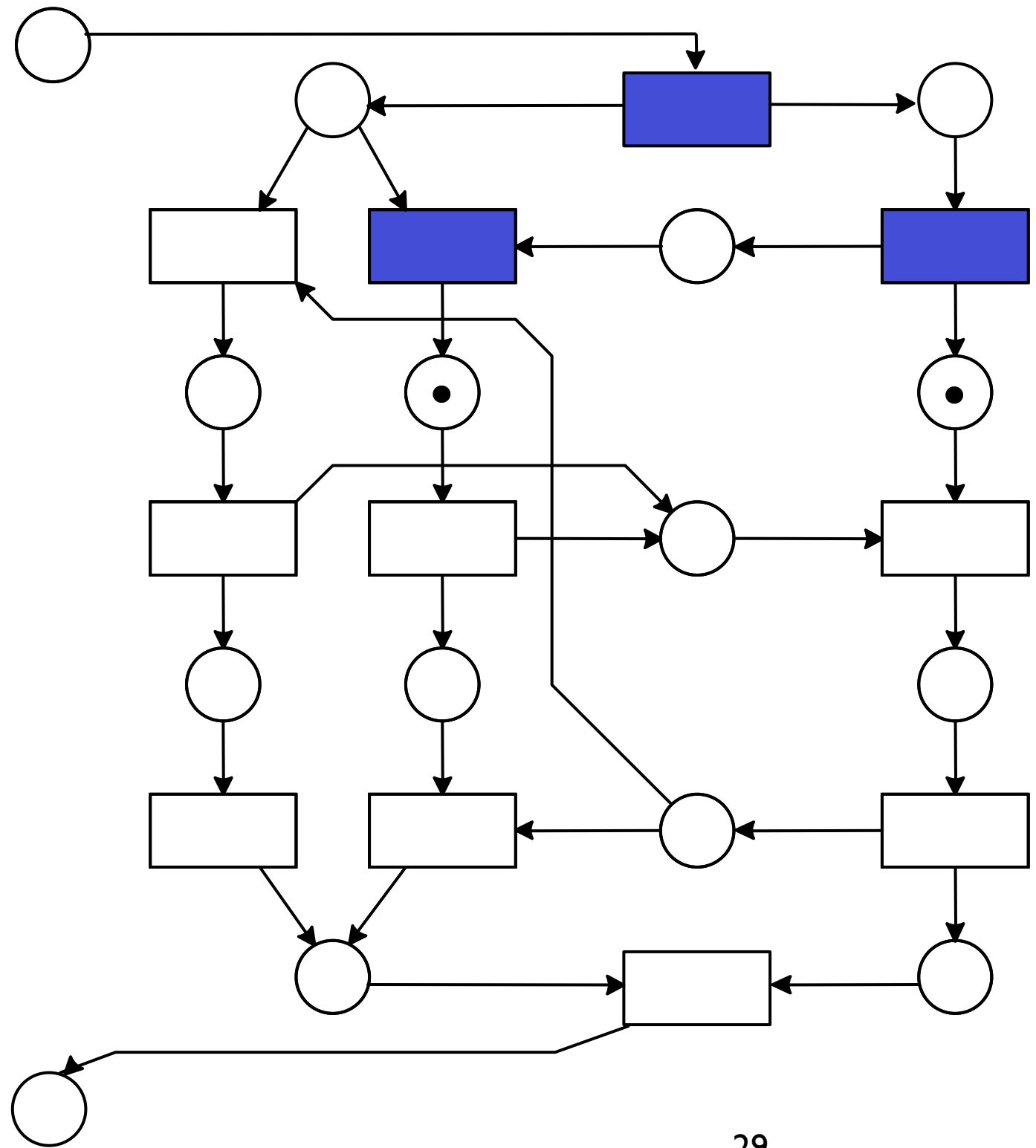
# Sound + Sound = not sound



# Sound + Sound = not sound



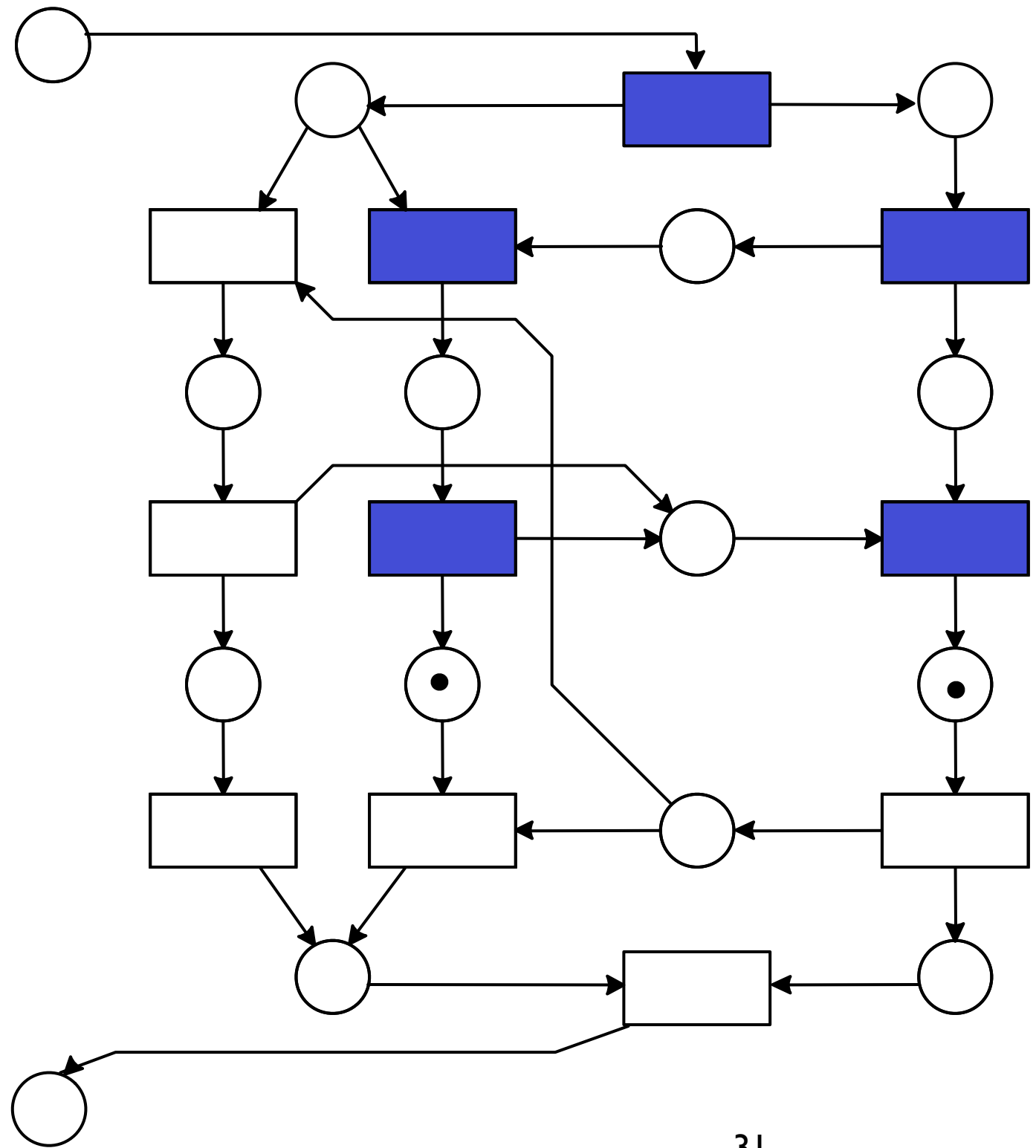
# Sound + Sound = not sound



M. Weske : Business Process Management,  
© Springer-Verlag Berlin Heidelberg 2007

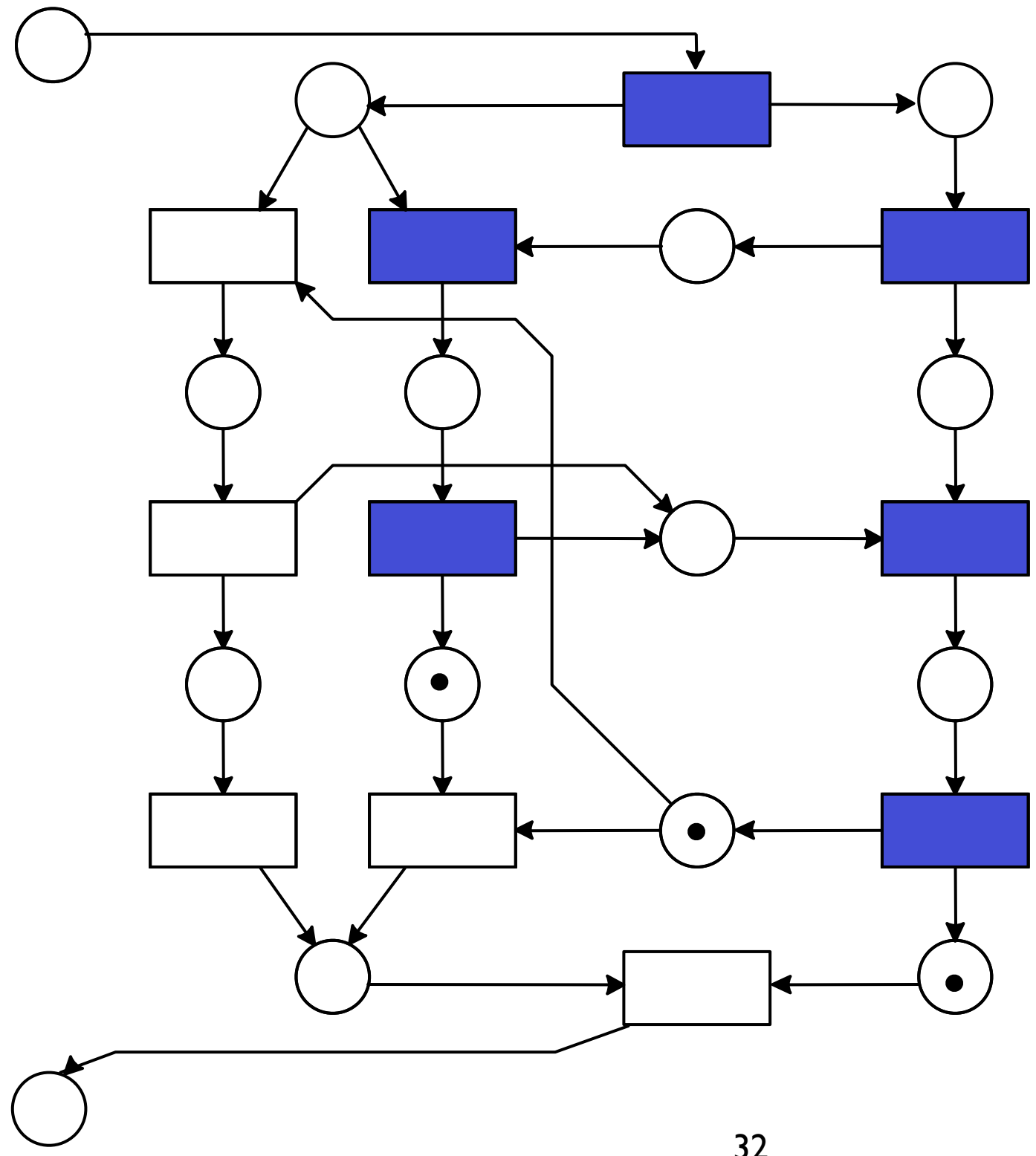


# Sound + Sound = not sound



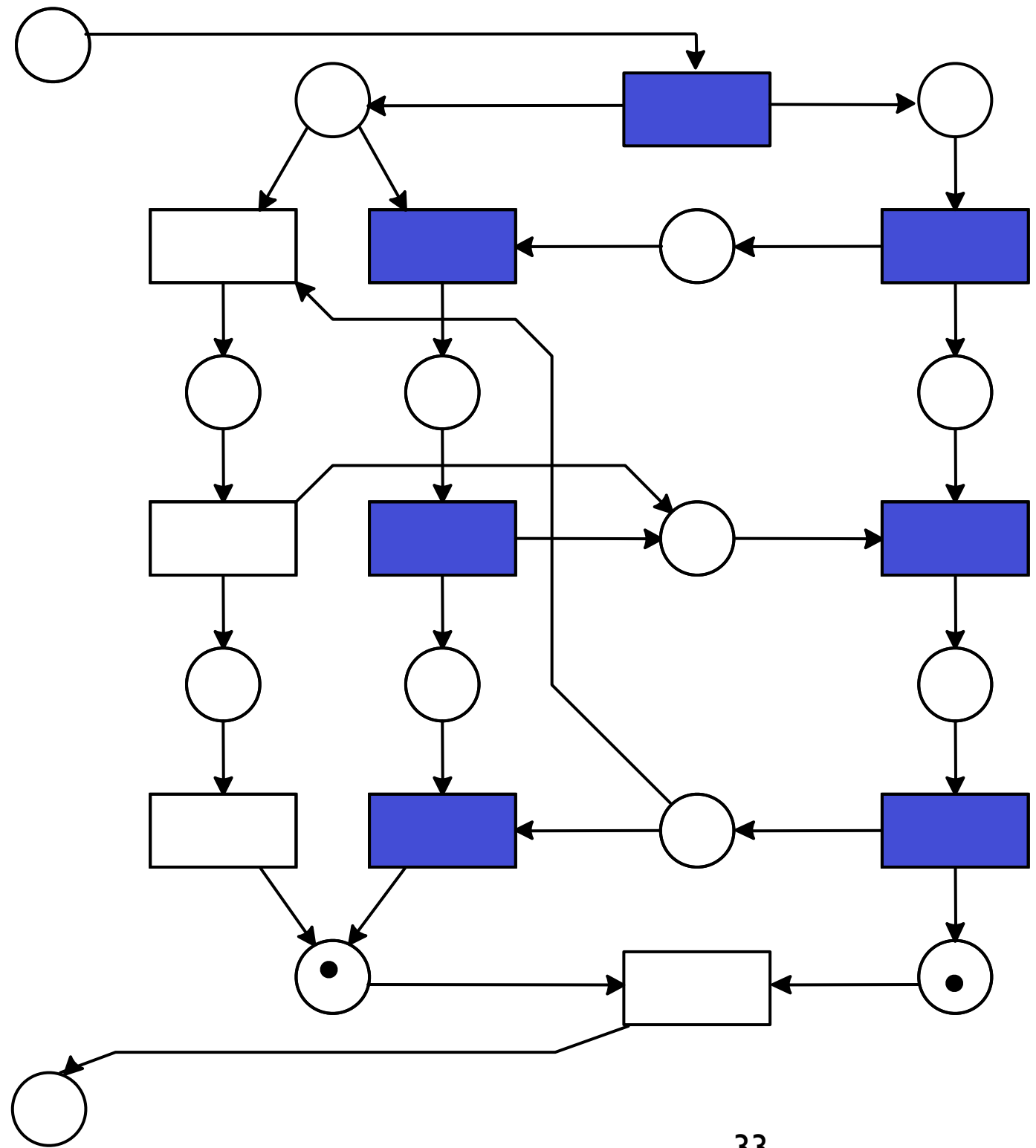
M. Weske : Business Process Management,  
© Springer-Verlag Berlin Heidelberg 2007

# Sound + Sound = not sound



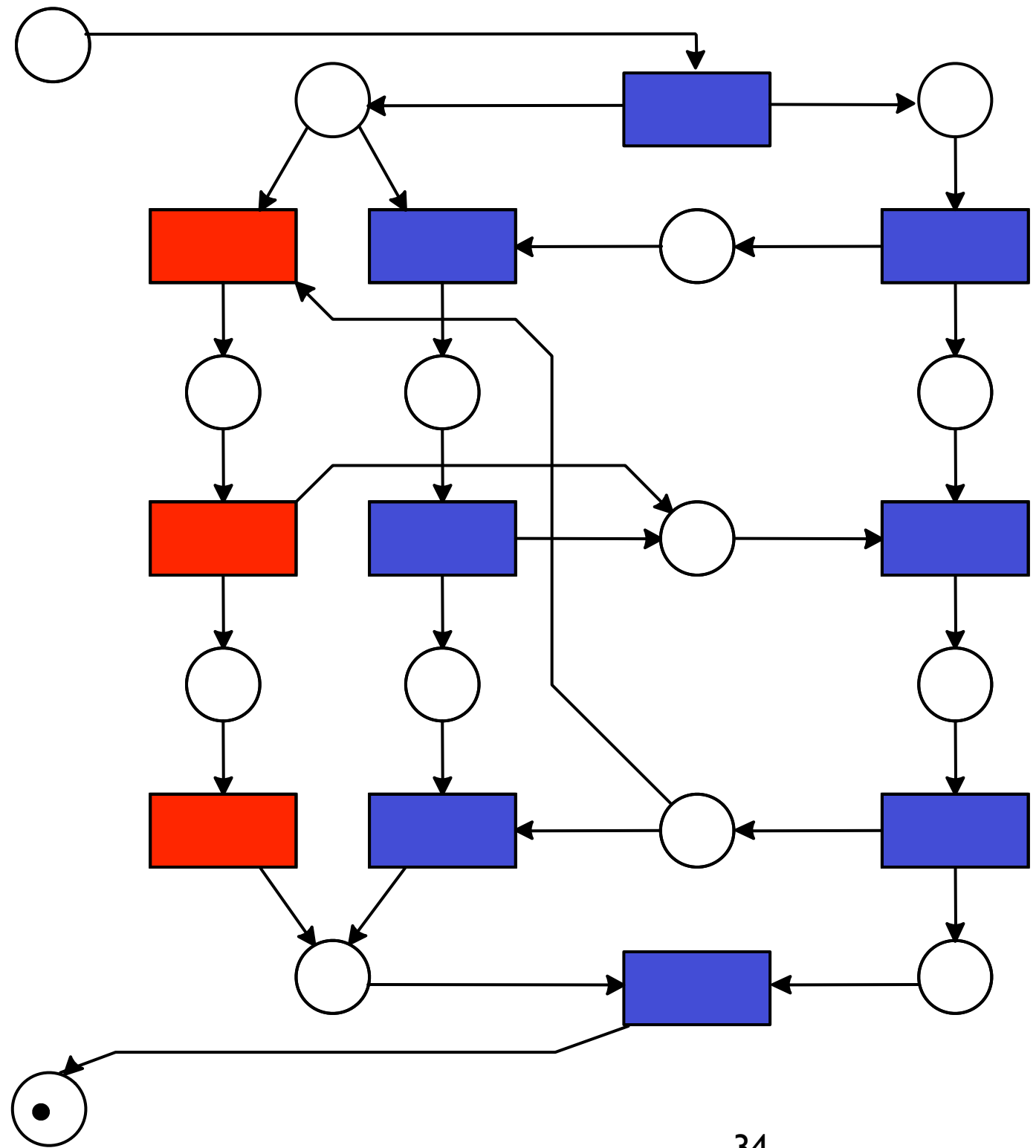


# Sound + Sound = not sound



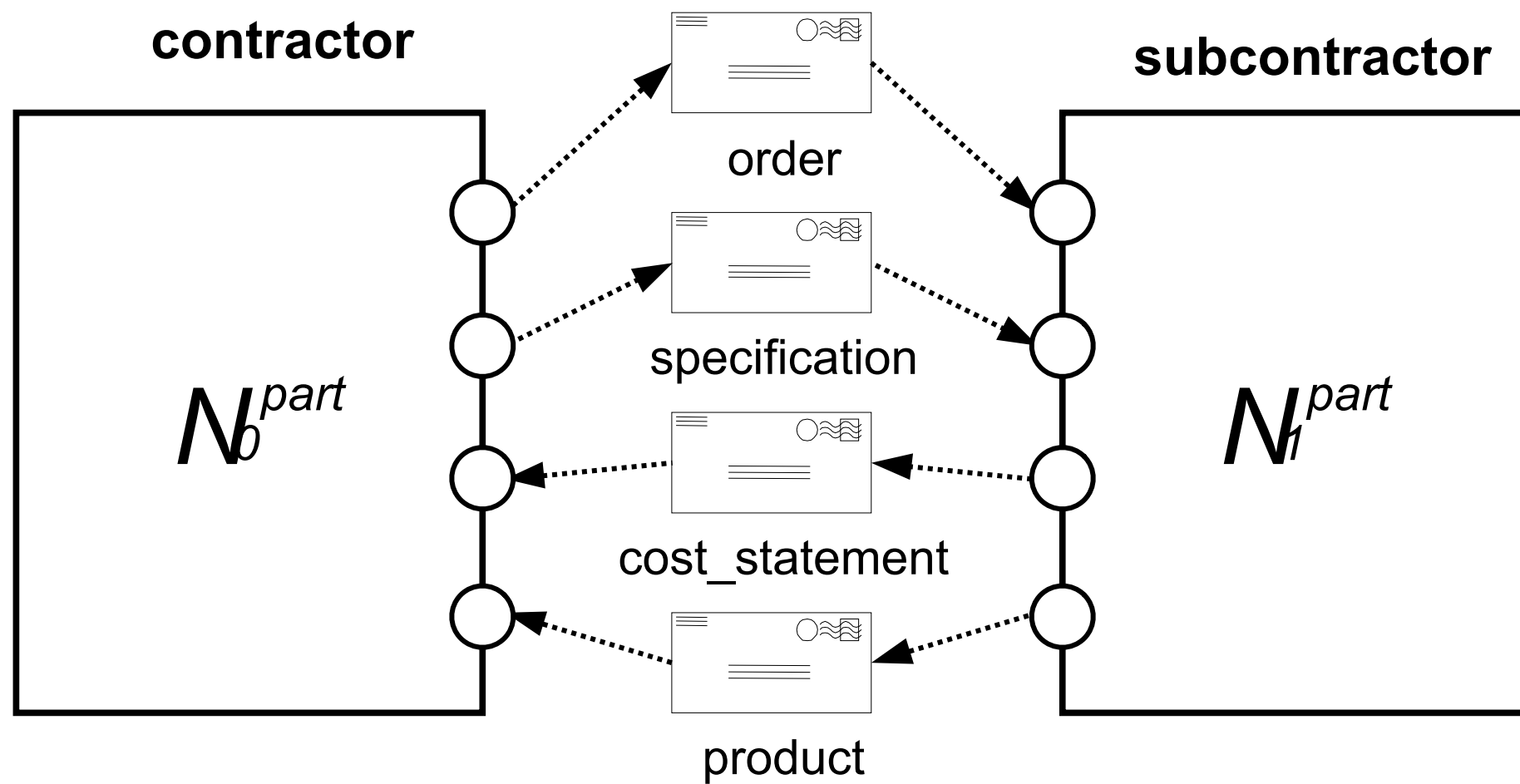
M. Weske : Business Process Management,  
© Springer-Verlag Berlin Heidelberg 2007

# Sound + Sound = not sound

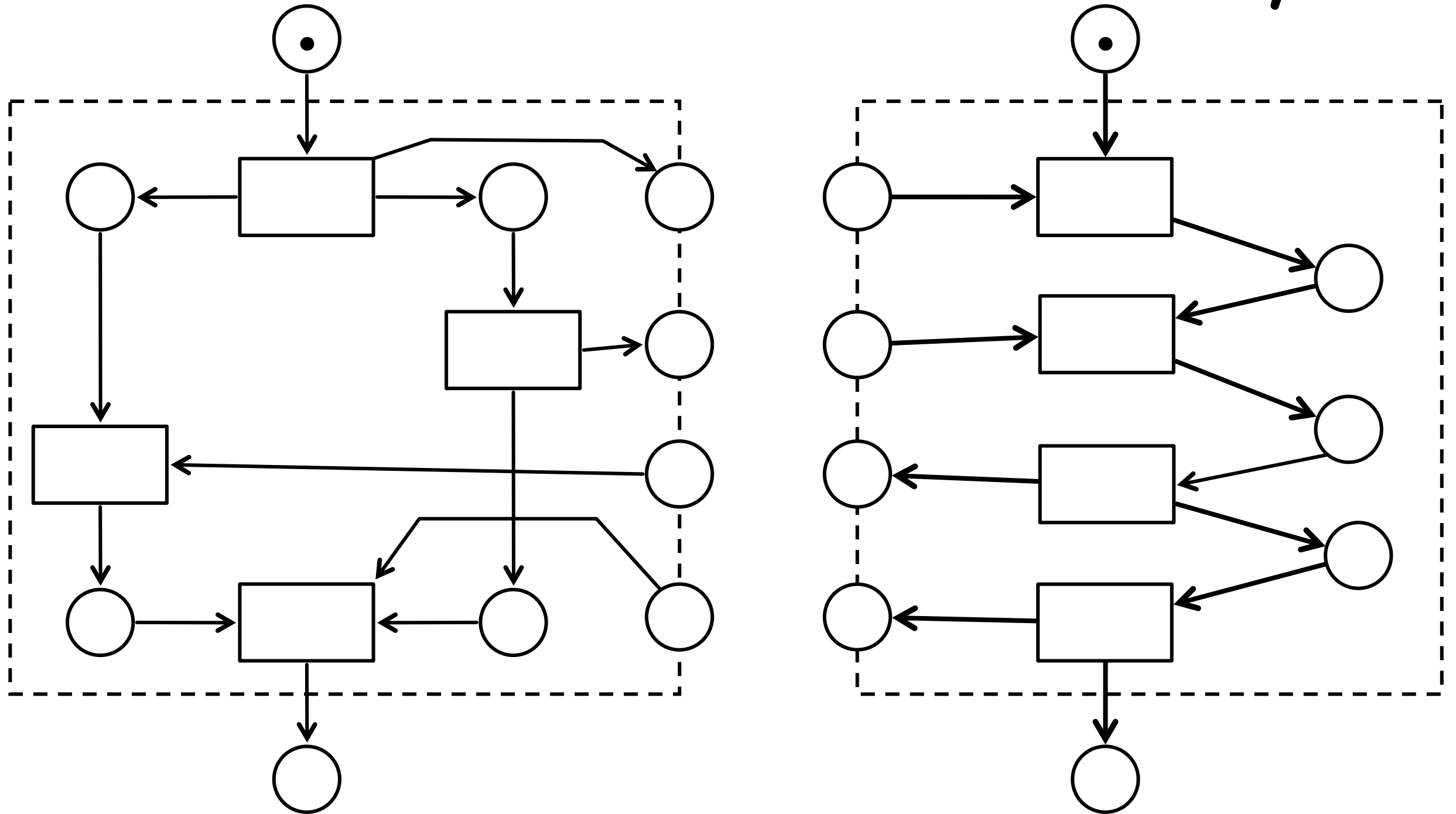


**Weak  
Sound!**

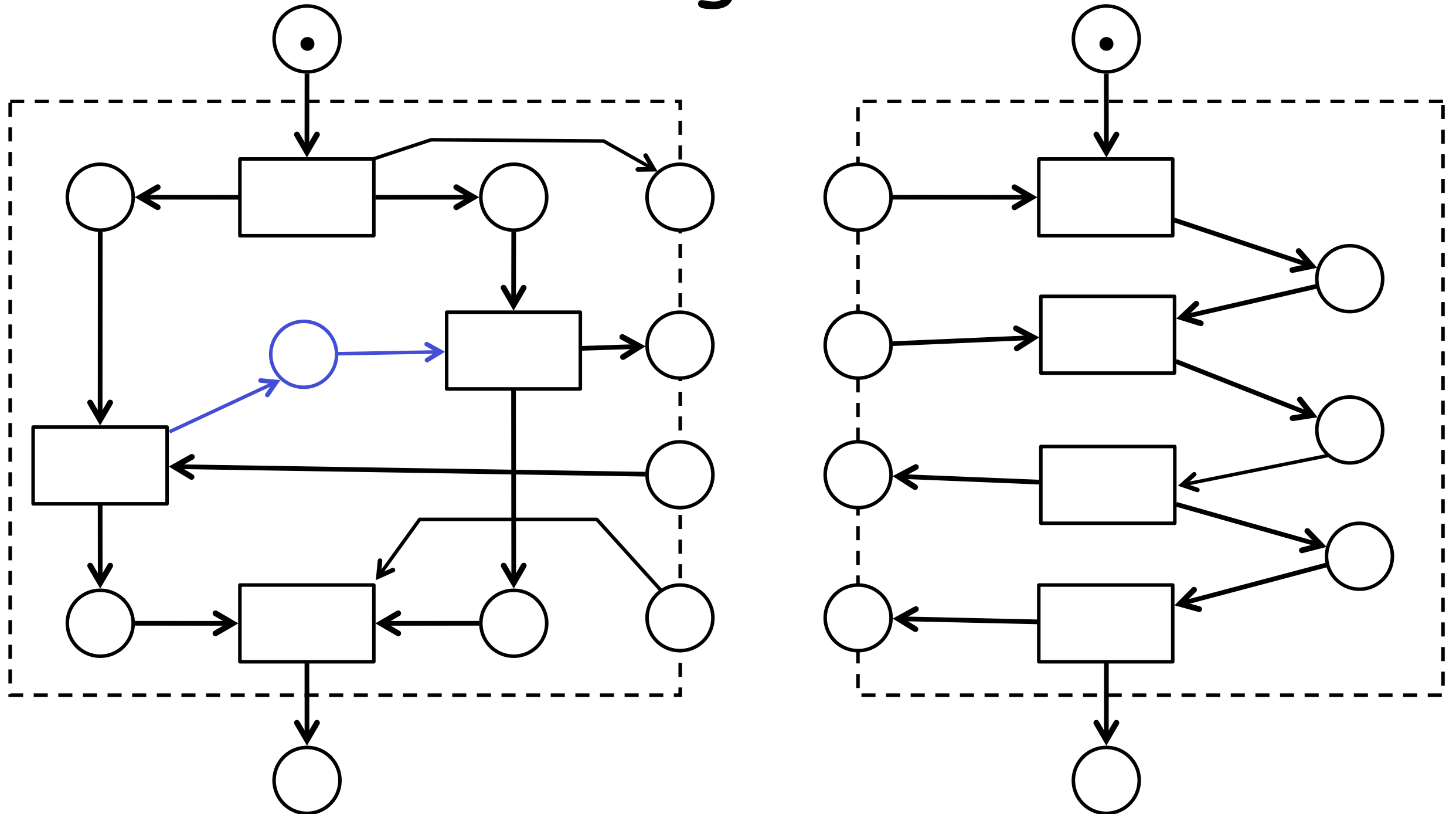
# Exercise: Preliminaries



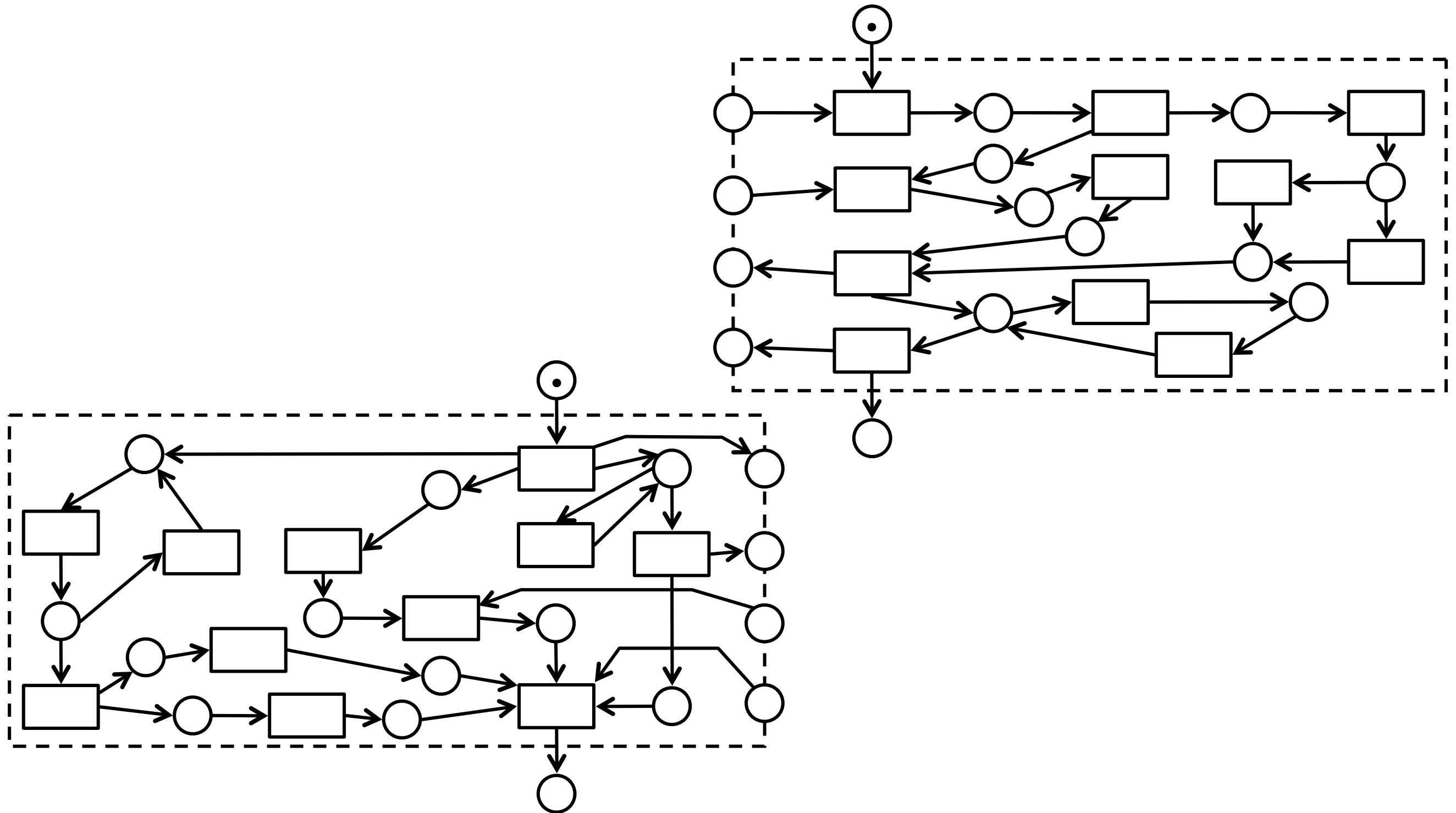
# Exercise: Check Weak Soundness of The Assembly



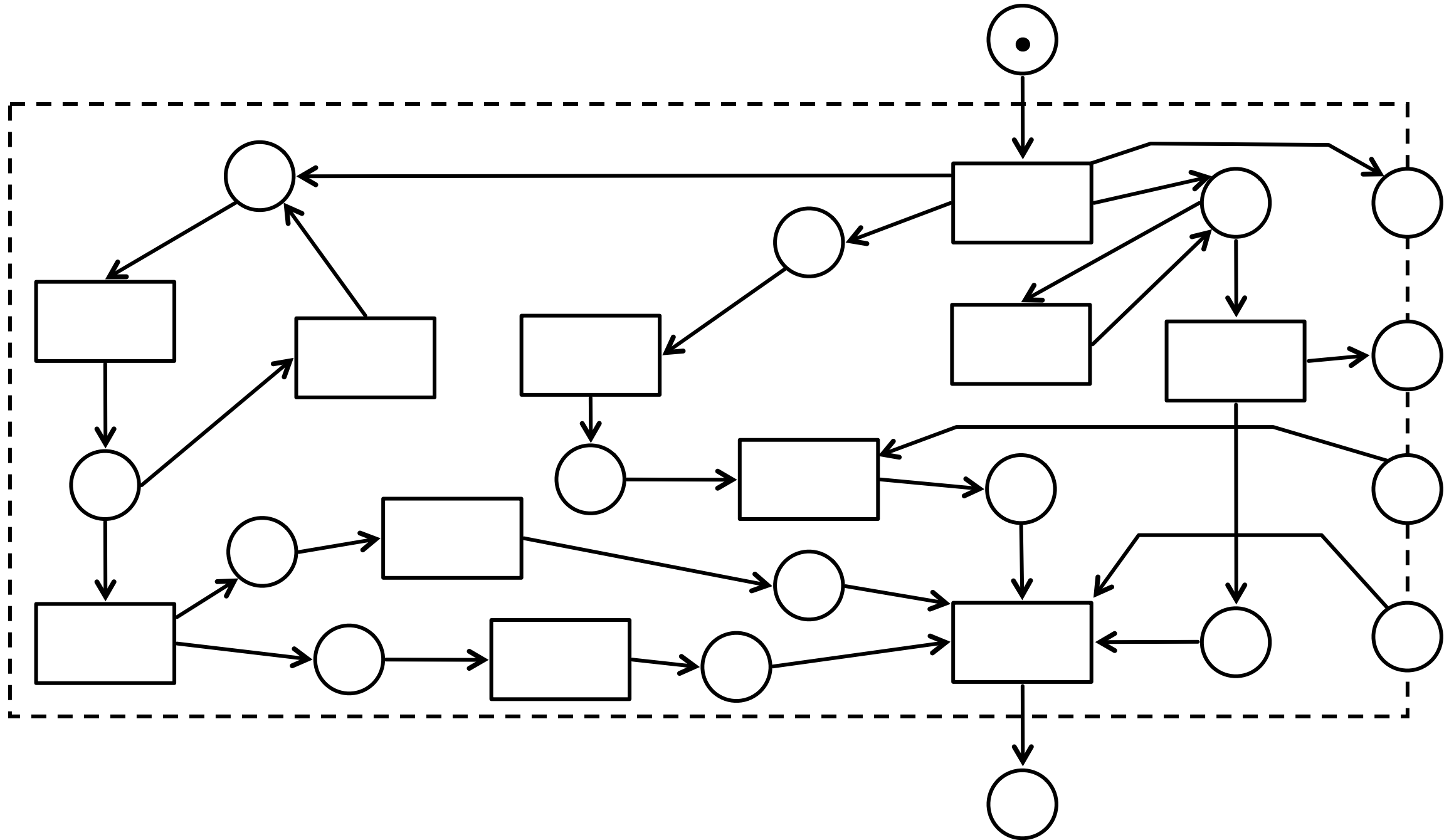
# Exercise: Check Again After Refactoring Contractor



# Exercise: Check Again After Refactoring Both



# (Contractor zoom-in)



# (Subcontractor zoom-in)

